



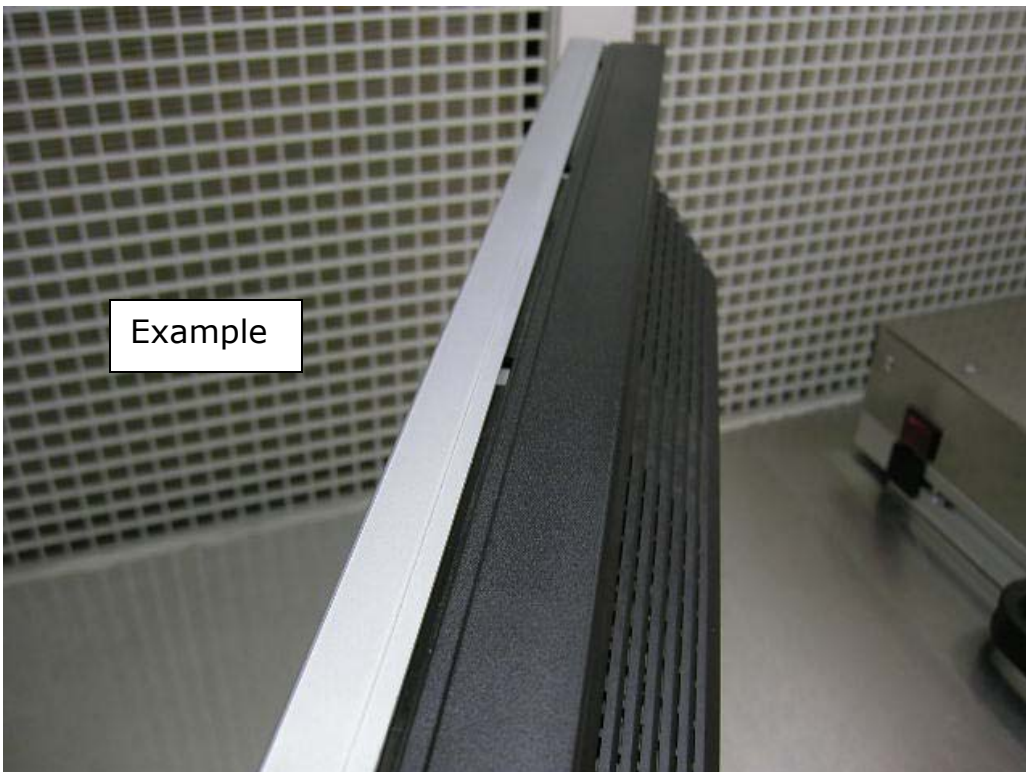
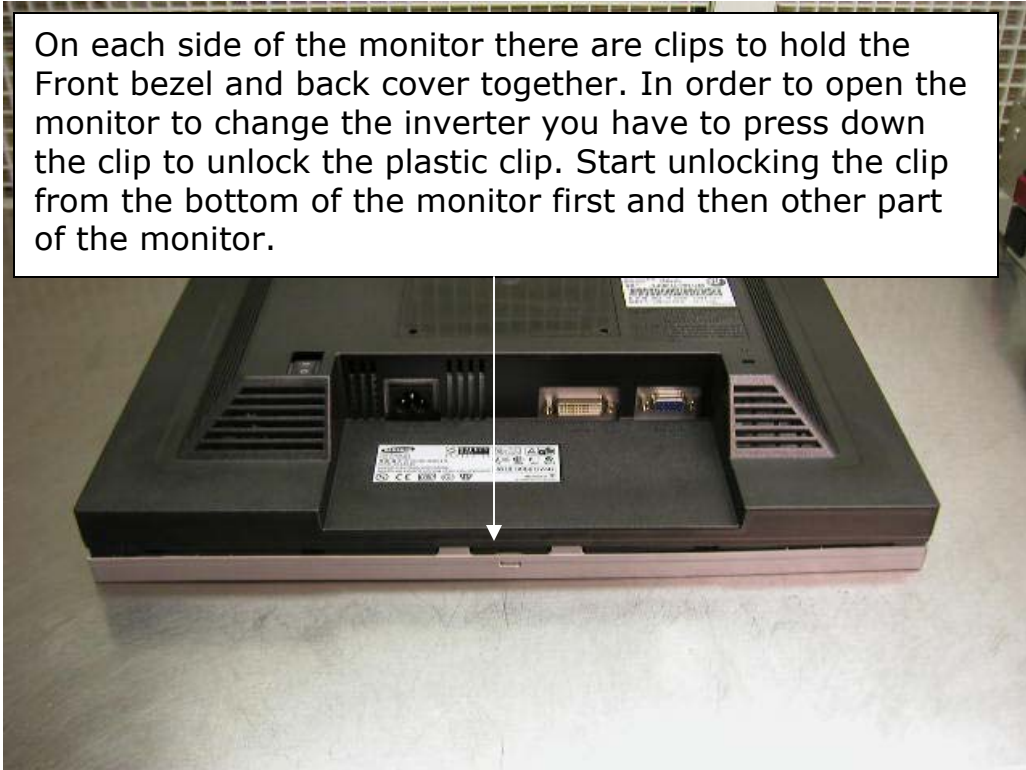
MoniServ, Inc.

<http://www.moniserv.com>

<http://www.lcdpart.com>

Backlight Inverter Installation Procedures for Samsung SyncMaster 181T

On each side of the monitor there are clips to hold the Front bezel and back cover together. In order to open the monitor to change the inverter you have to press down the clip to unlock the plastic clip. Start unlocking the clip from the bottom of the monitor first and then other part of the monitor.



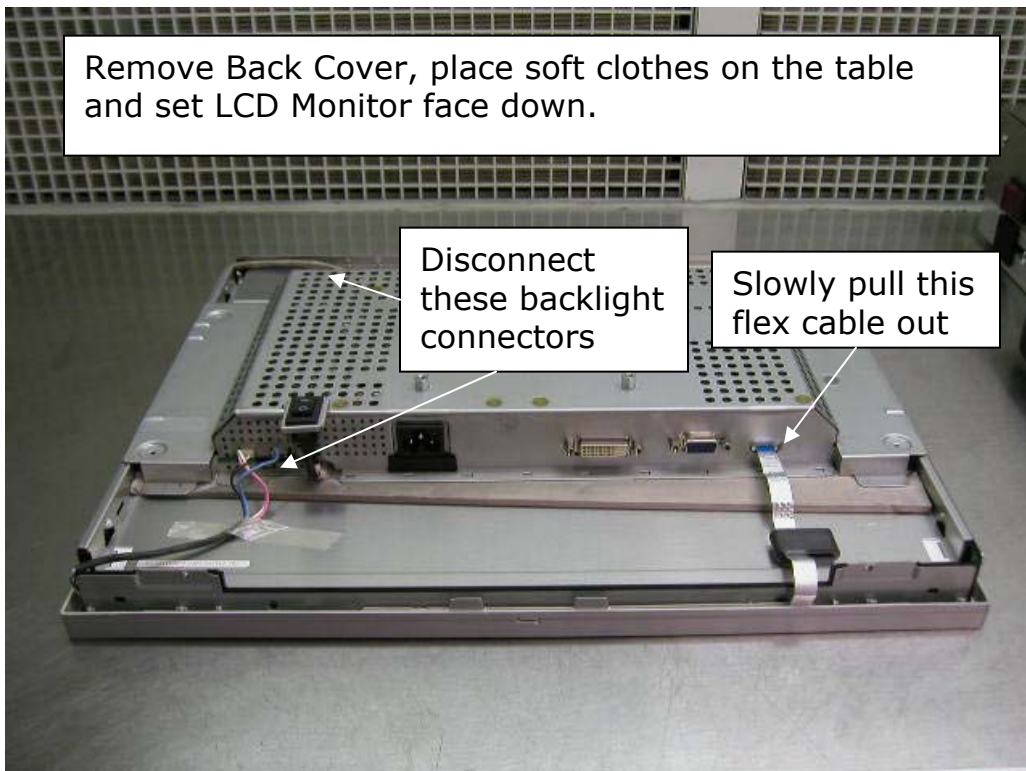
Example

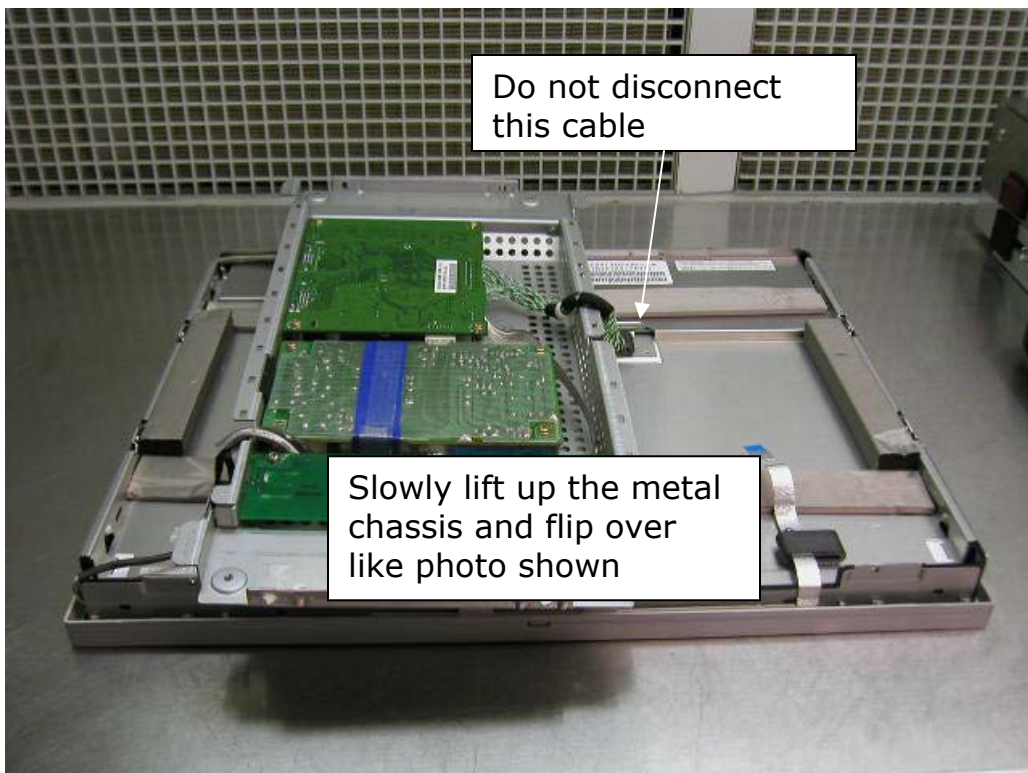
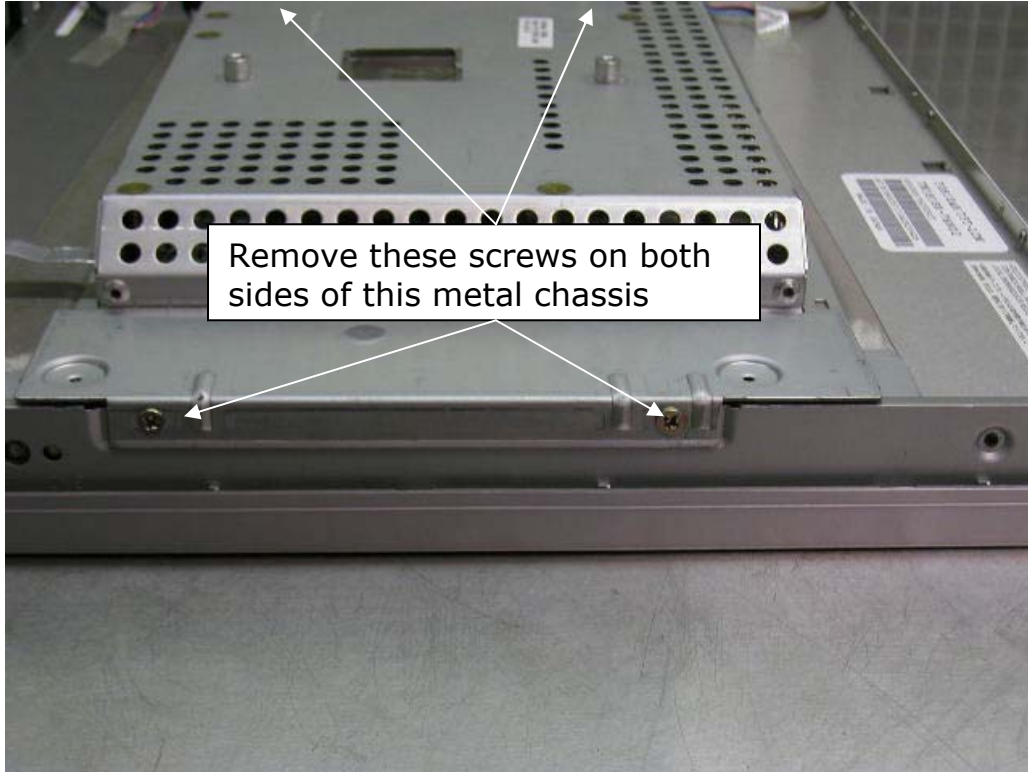


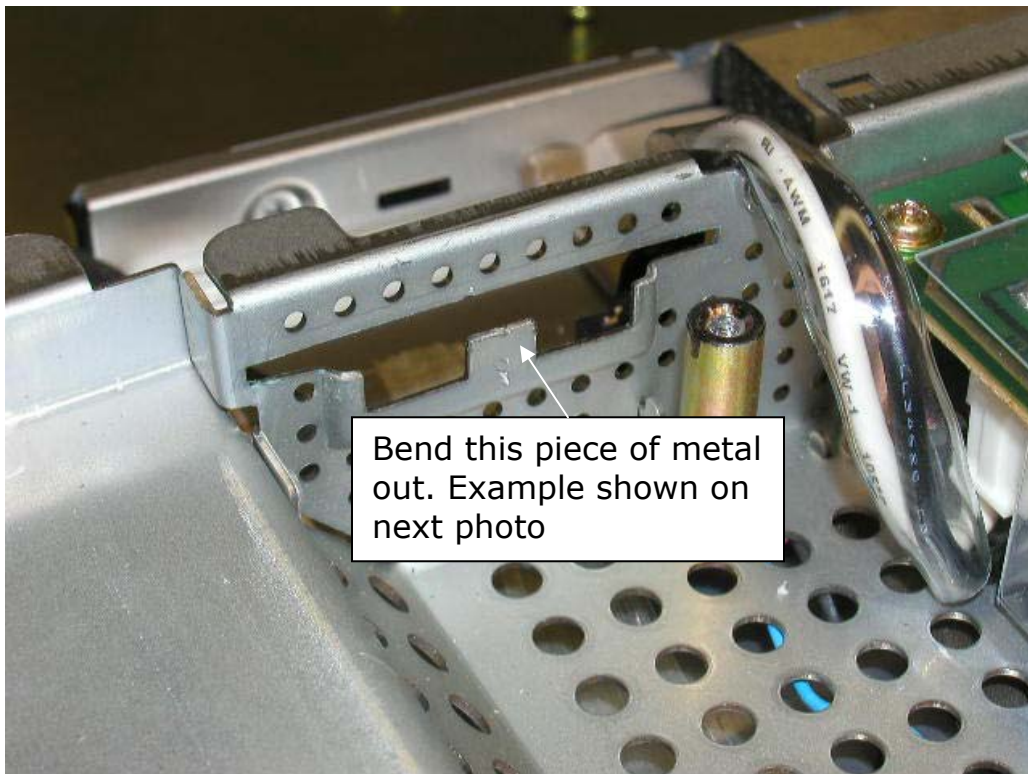
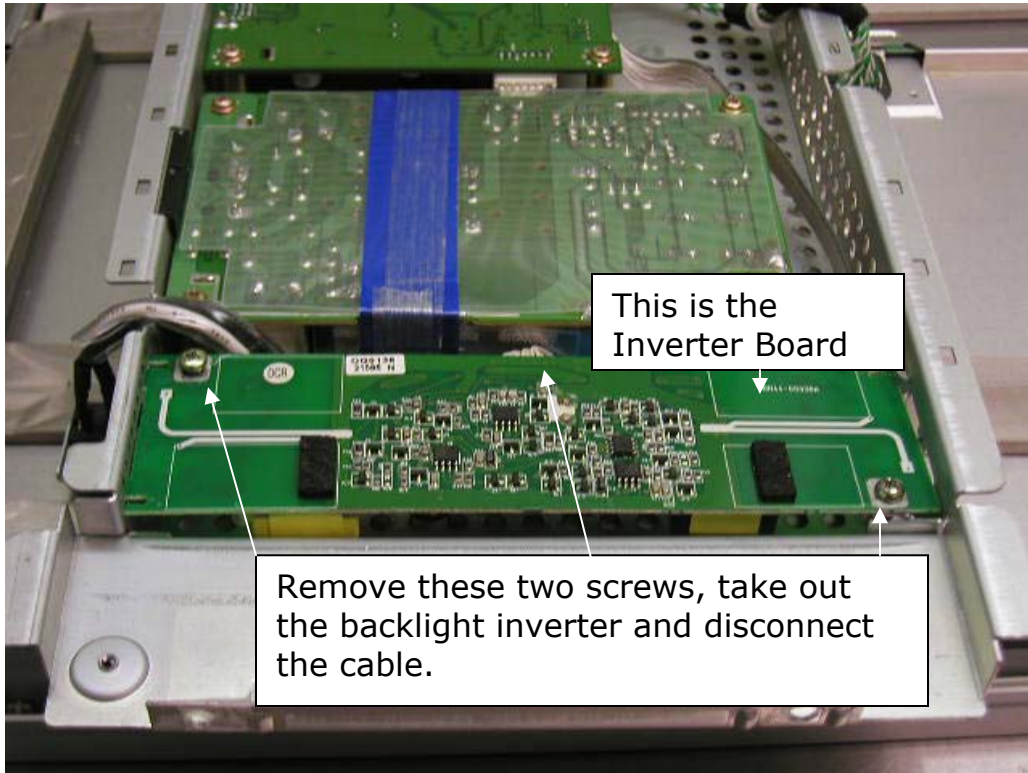
Remove Back Cover, place soft clothes on the table and set LCD Monitor face down.

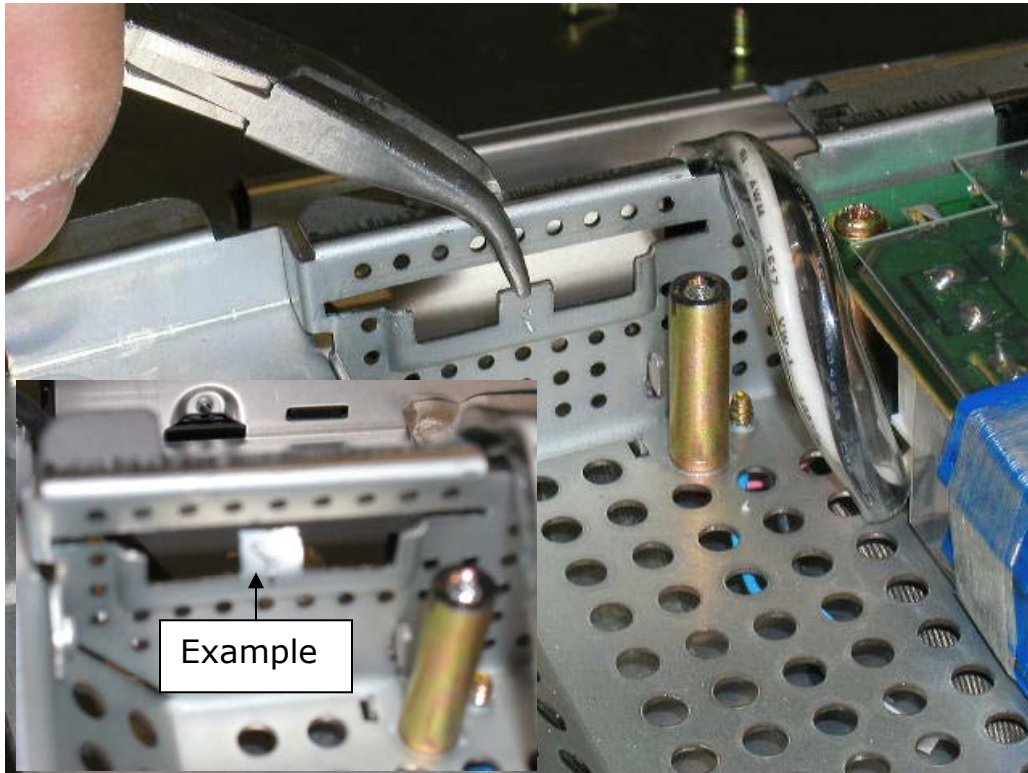
Disconnect these backlight connectors

Slowly pull this flex cable out









Replacing New Inverter and re-install all disassembly components back. Now your LCD Monitor working again.

MoniServ Part Number: K021036.00MSS Inverter Board