

DB01 - How to upload drive to LST02
www.lcdparts.net/db01.aspx

Download DB01 Register program online at <http://lcdparts.net/WHSCross.aspx>

LST02 Reference Table | LCDPARTS.net - Windows Internet Explorer

http://lcdparts.net/WHSCross.aspx

File Edit View Favorites Tools Help

1,2,3 off*: All new LST02 come with pre-load 1366x768_HD driver(Stared November 2011)
Custom Wire Harness:(\$40 to \$60 each, It depends on type of LCD screen)
We do offer custom made wire harness. Please email us your LCD screen part number to:
techsupport@lcdparts.net

DB01 Driver Burner for LST02 **\$24.99 - shipping is \$3 by USPS**

Our LCD Screen tester LST02 only comes with a standard resolution. So to test the LCD screens that have non standard resolution, DB01 driver burner is needed. DB01 allows you to load a non standard driver (resolution) into LST02. For example: To test a 17.3" LED screen, you do need to set the resolution to 1600X900. But this resolution cannot accomplish by setting the dip switch. Then DB01 is needed in order to load 1600X900_1LVDS driver into LST02. All drivers are available at [Cross Reference Table](#)

Buy Now

DB_Register is a program that you need to install in your computer. So it could establish a connection between LST02 and DB1 throughout 9 pin serial cable.
[Download](#)

DB01 comes with 9 pin serial data cable and 4 pin to 4 pin wire harness.
[How to Use DB01](#)

[WWW.LCDPARTS.NET](http://www.lcdparts.net)

[WWW.LCDPARTS.NET](http://www.lcdparts.net)

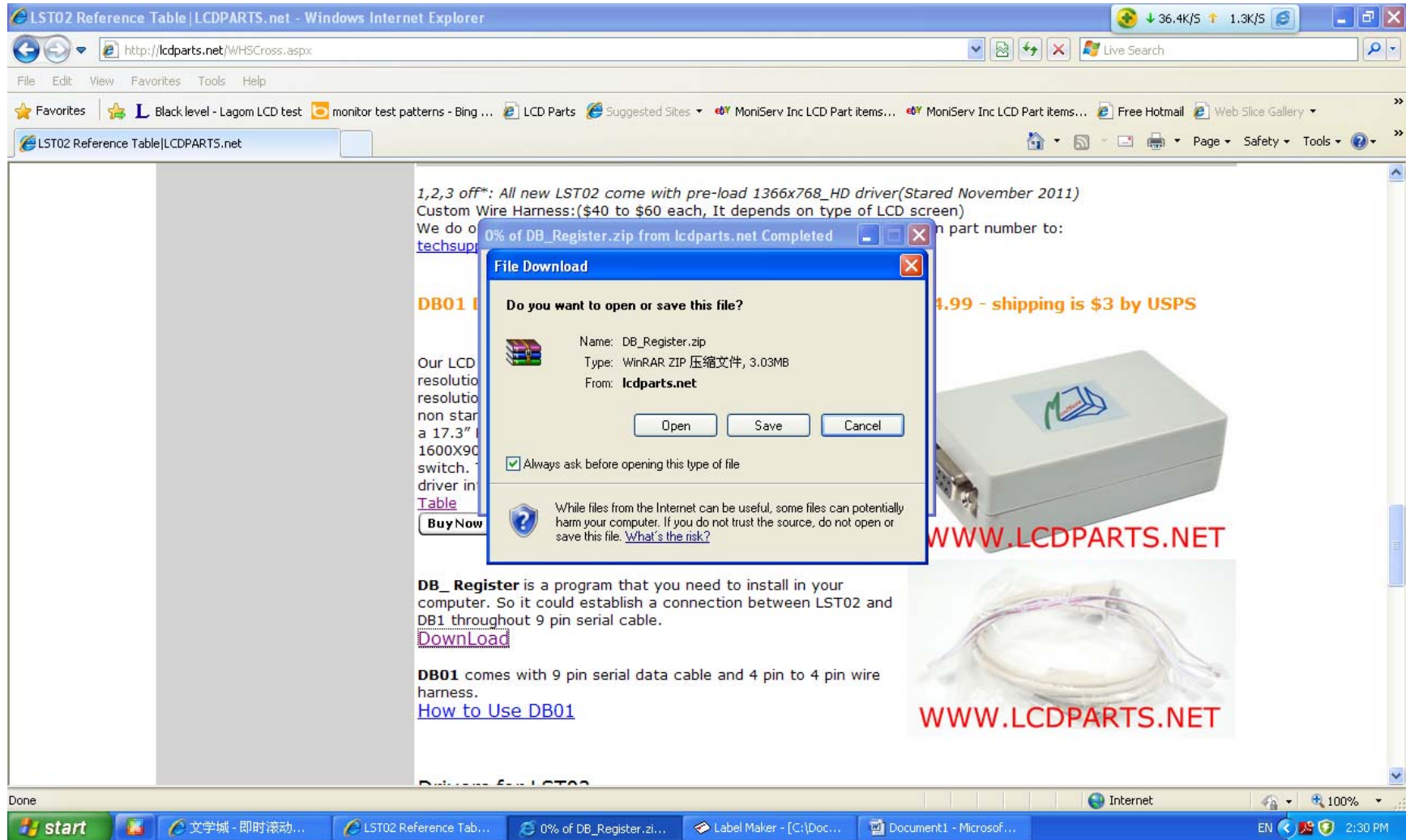
http://lcdparts.net/Files/DB_Register.zip

start 文学城 - 即时滚动... LST02 Reference Tab... Label Maker - [C:\Doc... Document1 - Microsof... Internet 100% 2:30 PM

DB01 - How to upload drive to LST02
www.lcdparts.net/db01.aspx

DB01 - How to upload drive to LST02
www.lcdparts.net/db01.aspx

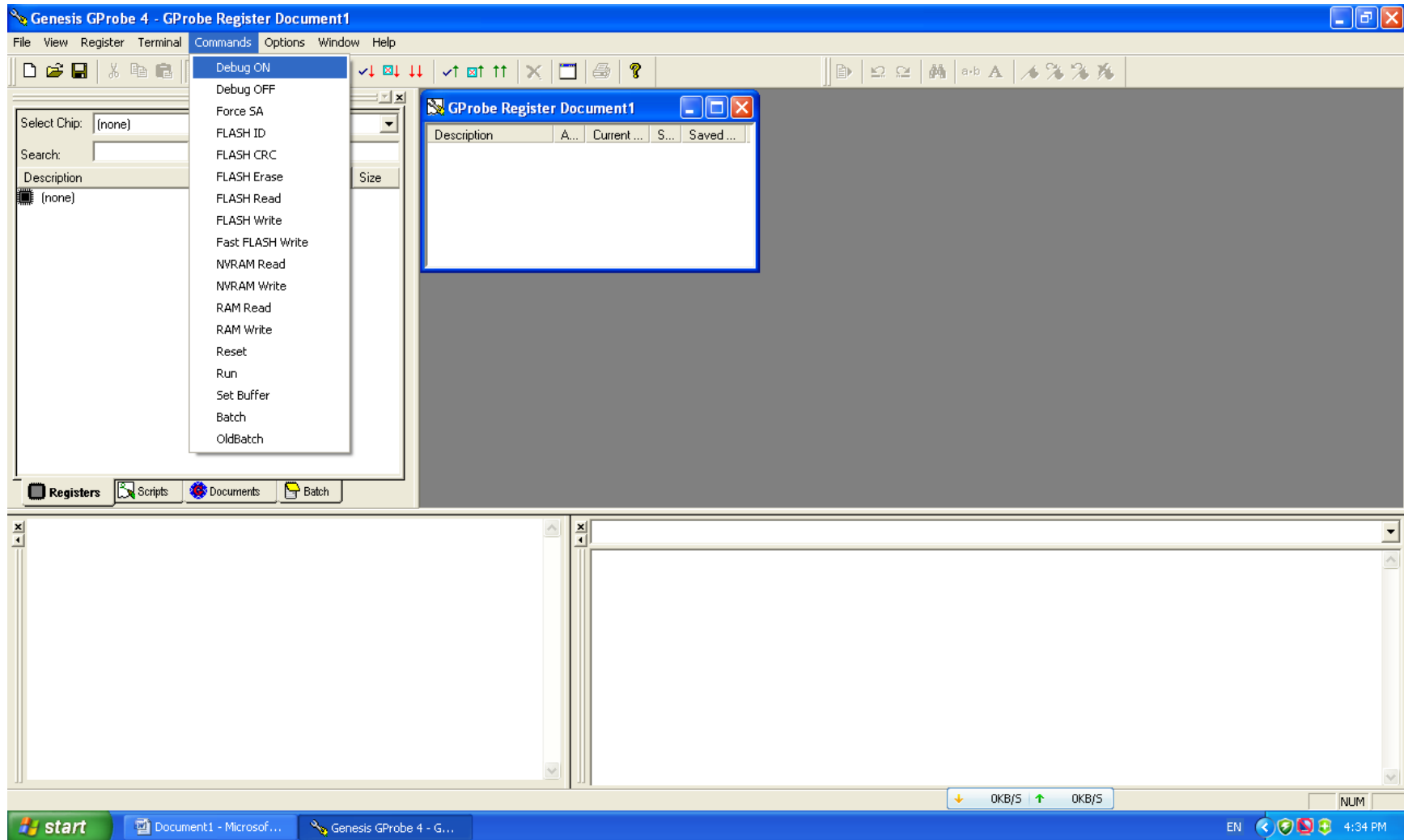
Click Open to unzip and install DB01 Register. Please click "Yes" after finished installation and It will automatically open the program



DB01 - How to upload drive to LST02
www.lcdparts.net/db01.aspx

DB01 - How to upload drive to LST02
www.lcdparts.net/db01.aspx

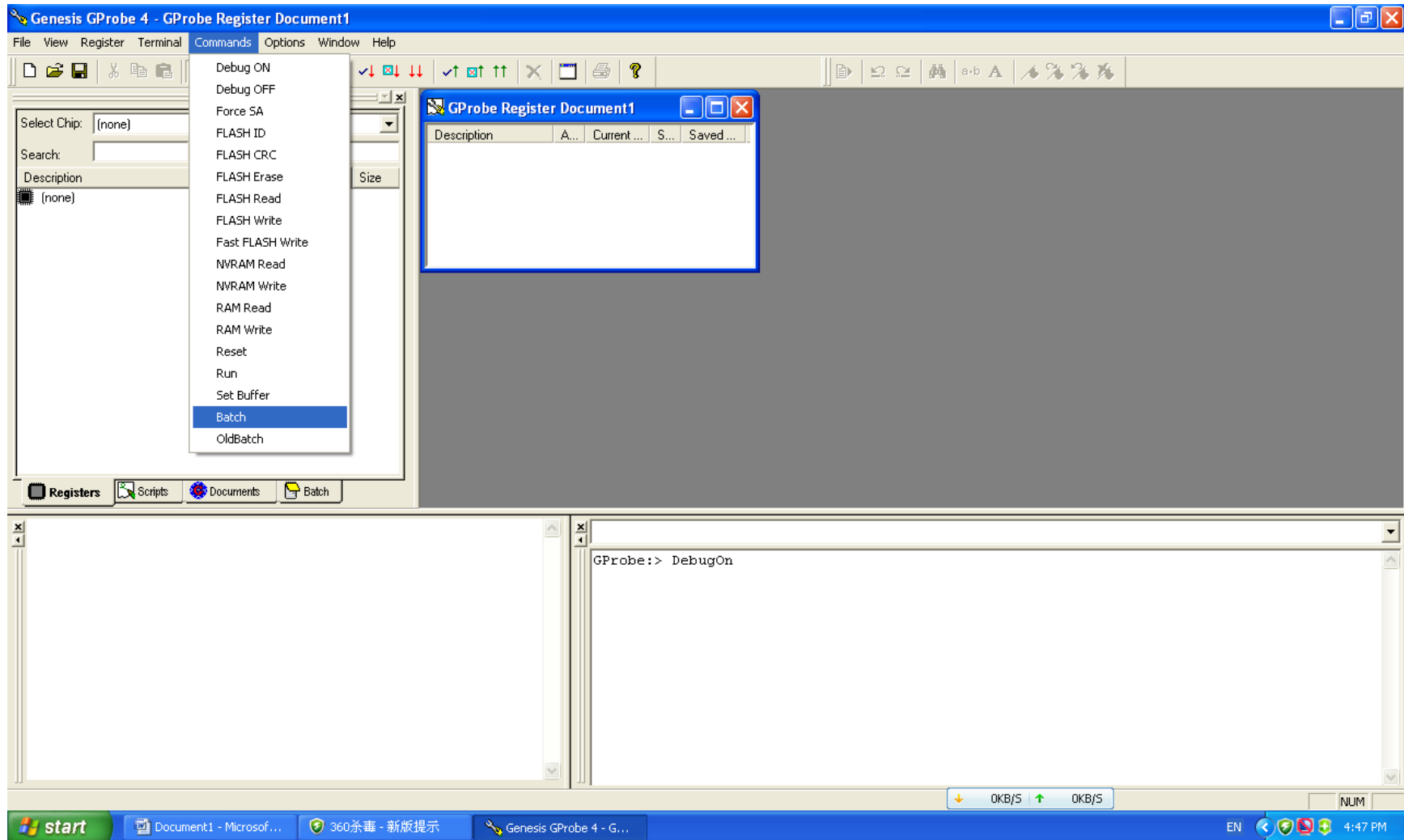
Open GProbe4→Commands→Debug On (*Note: One of Dip Switch MUST set to "ON" before set "Debug On"*)



DB01 - How to upload drive to LST02
www.lcdparts.net/db01.aspx

DB01 - How to upload drive to LST02
www.lcdparts.net/db01.aspx

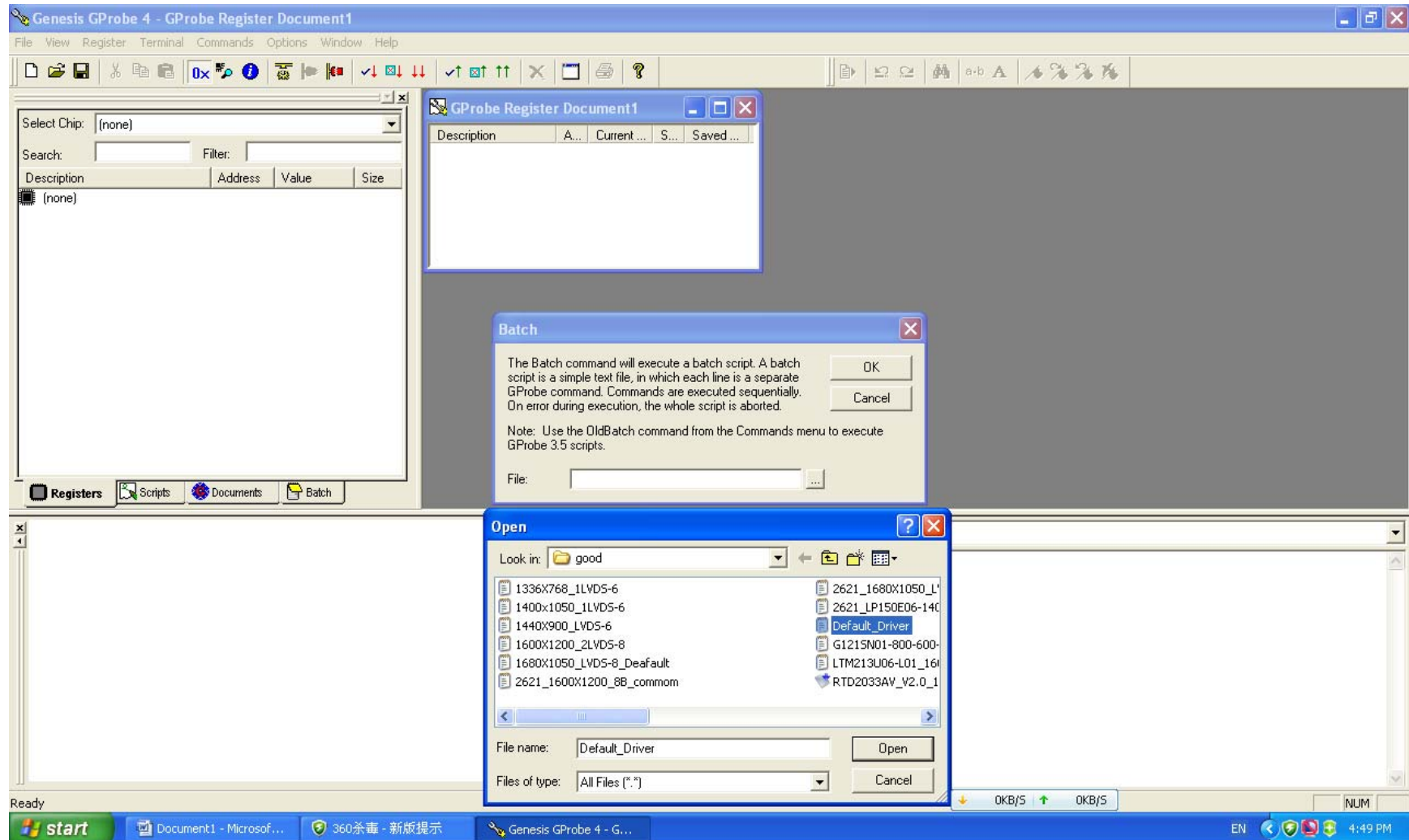
Commands→Batch



DB01 - How to upload drive to LST02
www.lcdparts.net/db01.aspx

DB01 - How to upload drive to LST02
www.lcdparts.net/db01.aspx

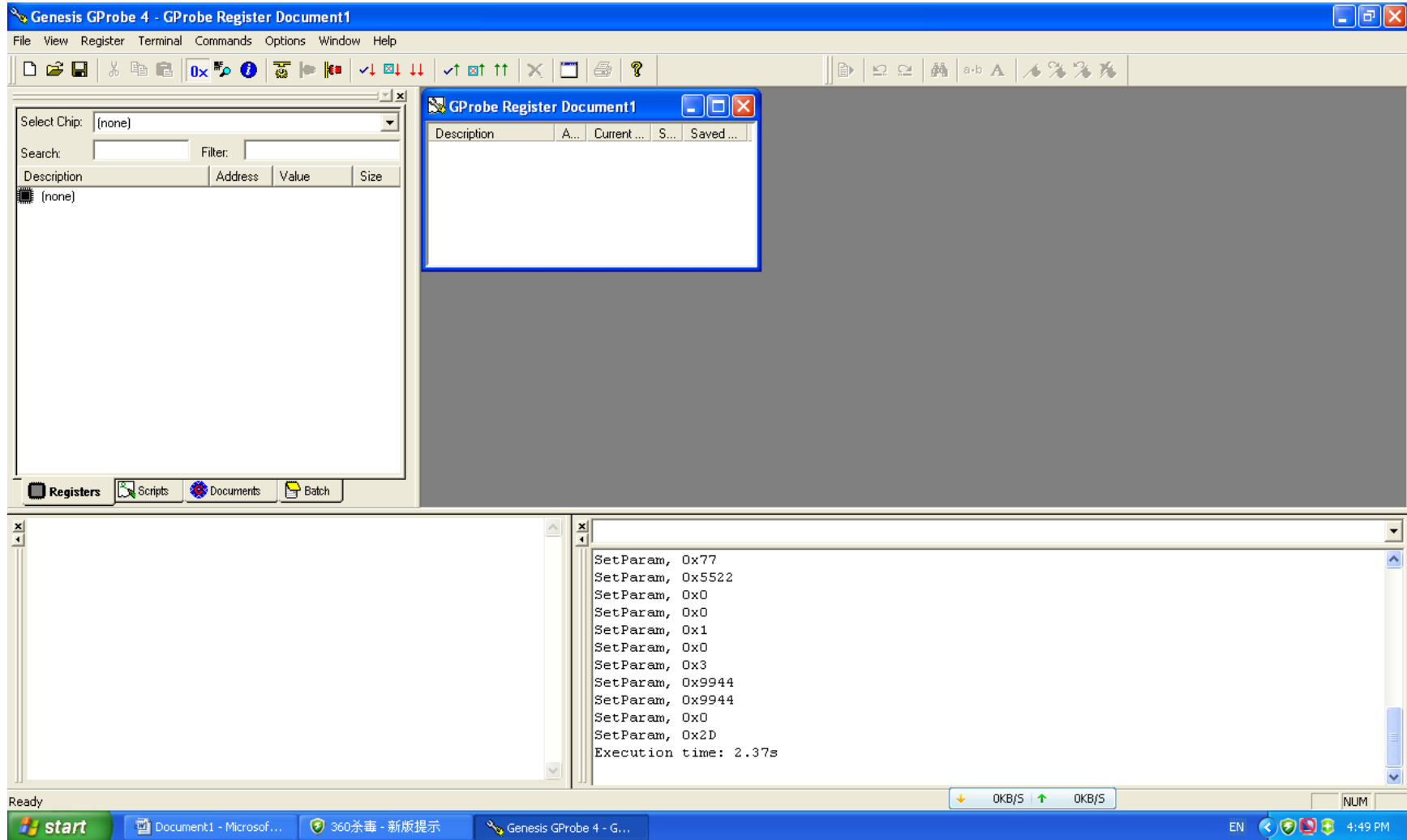
Click ... on File Row, Locate the drive that needs to up upload, Then Click OK



DB01 - How to upload drive to LST02
www.lcdparts.net/db01.aspx

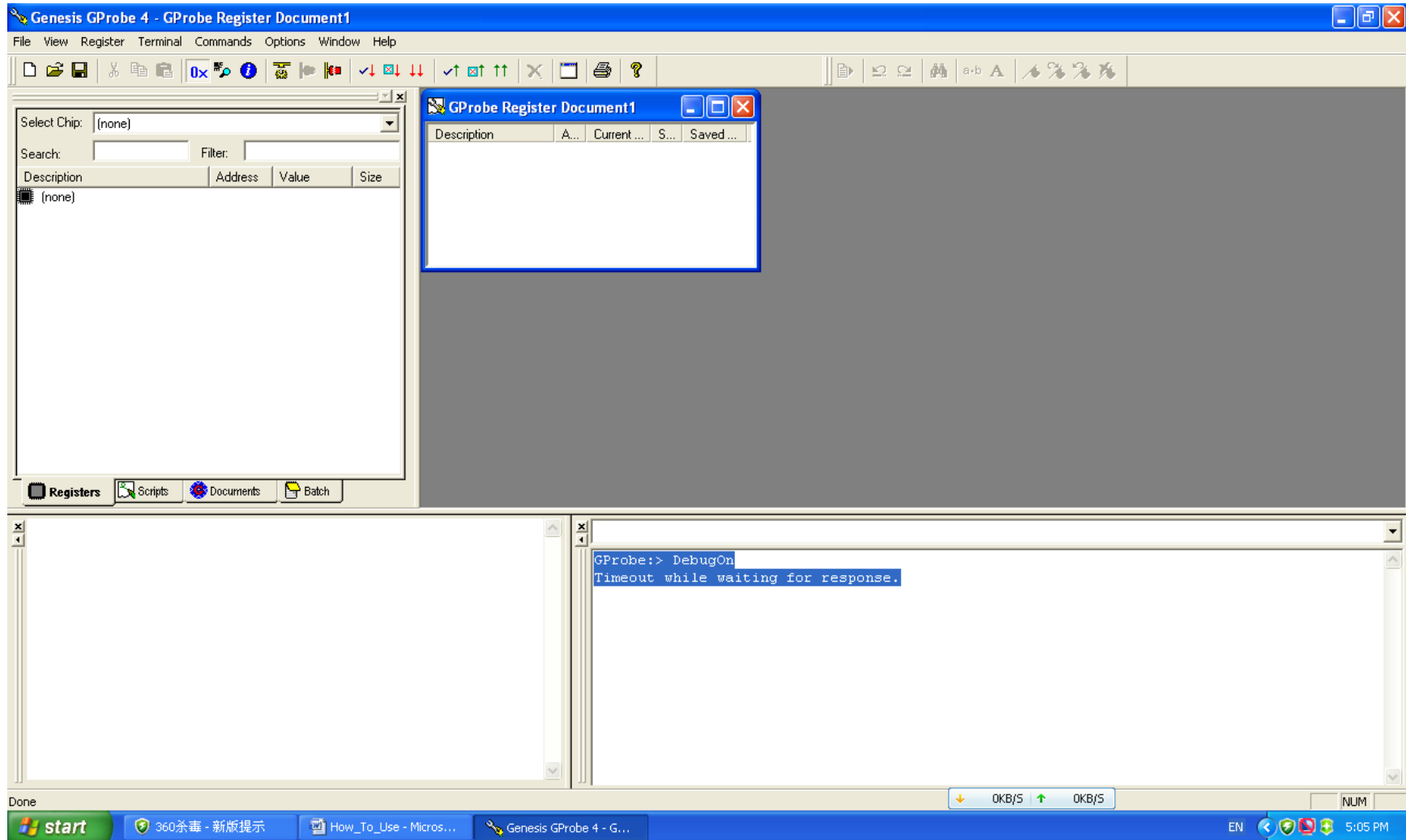
DB01 - How to upload drive to LST02
www.lcdparts.net/db01.aspx

When Drive is uploaded successful, you will see an Execute time on right bottom corner display.



DB01 - How to upload drive to LST02
www.lcdparts.net/db01.aspx

DB01 - How to upload drive to LST02
www.lcdparts.net/db01.aspx



DB01 - How to upload drive to LST02
www.lcdparts.net/db01.aspx

DB01 - How to upload drive to LST02
www.lcdparts.net/db01.aspx

When drive has successfully loaded into LST02:

1. Disconnect 4 pin wire harness
2. Disconnect DC Power Jack on LST02
3. Make sure Dip switch are on "OFF" position

Now LST02 is ready to test LCD Screen that has higher resolutions.

Note: You do not need to restore default driver, anyway here is how to restore to default Driver:

1. *Download LST02_DEFAULT_DRIVER*
2. *Repeat the above procedure*

Troubleshooting Tips: Error Message:

"Timeout while waiting for response"

Please check the following connections:

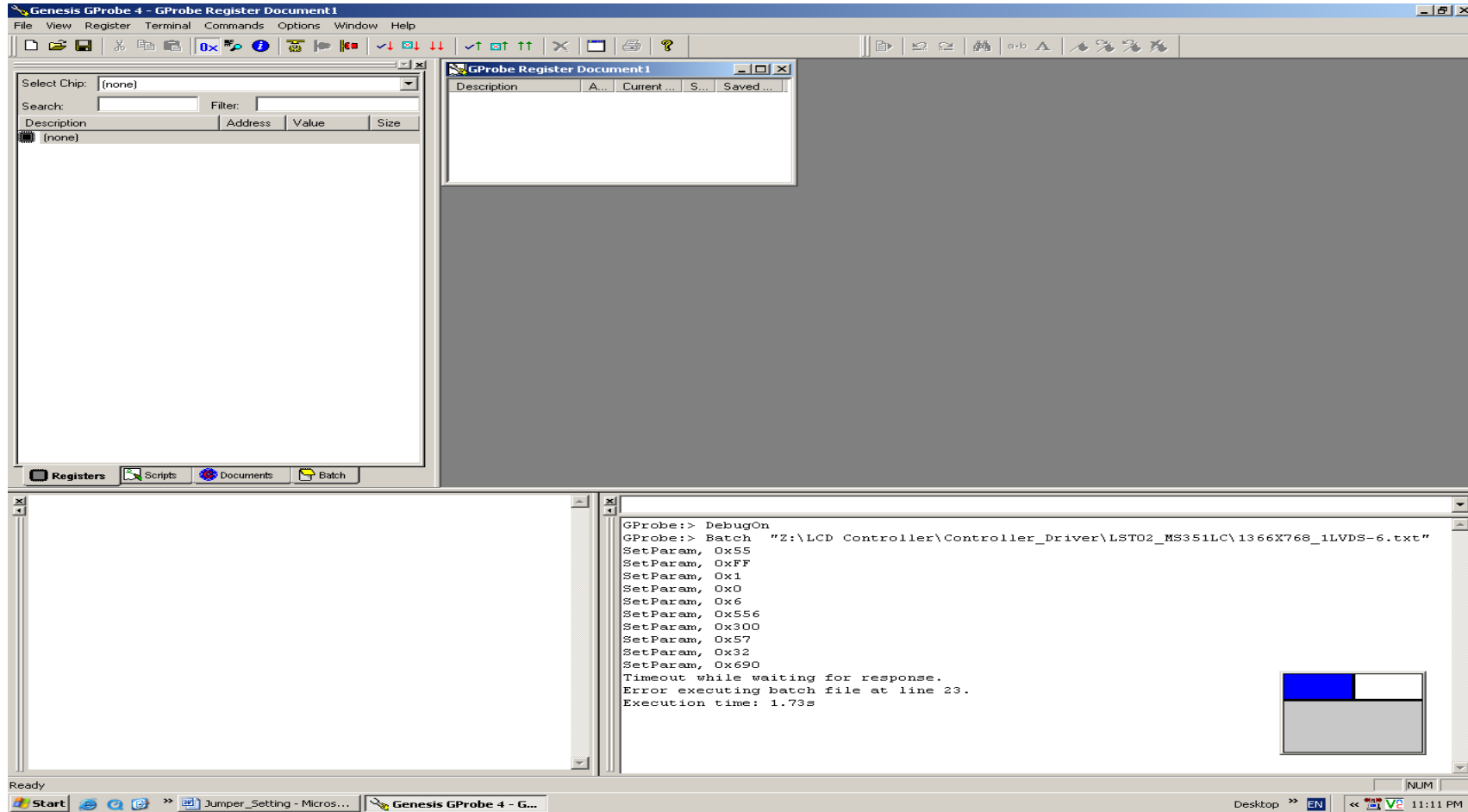
1. 9 Pin serial data cable between serial port and DB01
2. 4 pin wire harness between DB01 and LST02
3. Make sure one of Dip switch MUST be Set "On" in order to establish a connection between PC and LST02 through DB01

If the problem still exists, please un-install DB01 Register program (GProbe4) and re-install again. It should solve the issue.

DB01 - How to upload drive to LST02
www.lcdparts.net/db01.aspx

Can set " DebugOn" but Cannot load any drivers:

This symptom could cause either by DB01 or LST02 LCD Controller. It usually happens while loading new driver to LST02 MCU and it somehow damaged MCU memory. If above symptom appear, please mail back DB01 for testing.

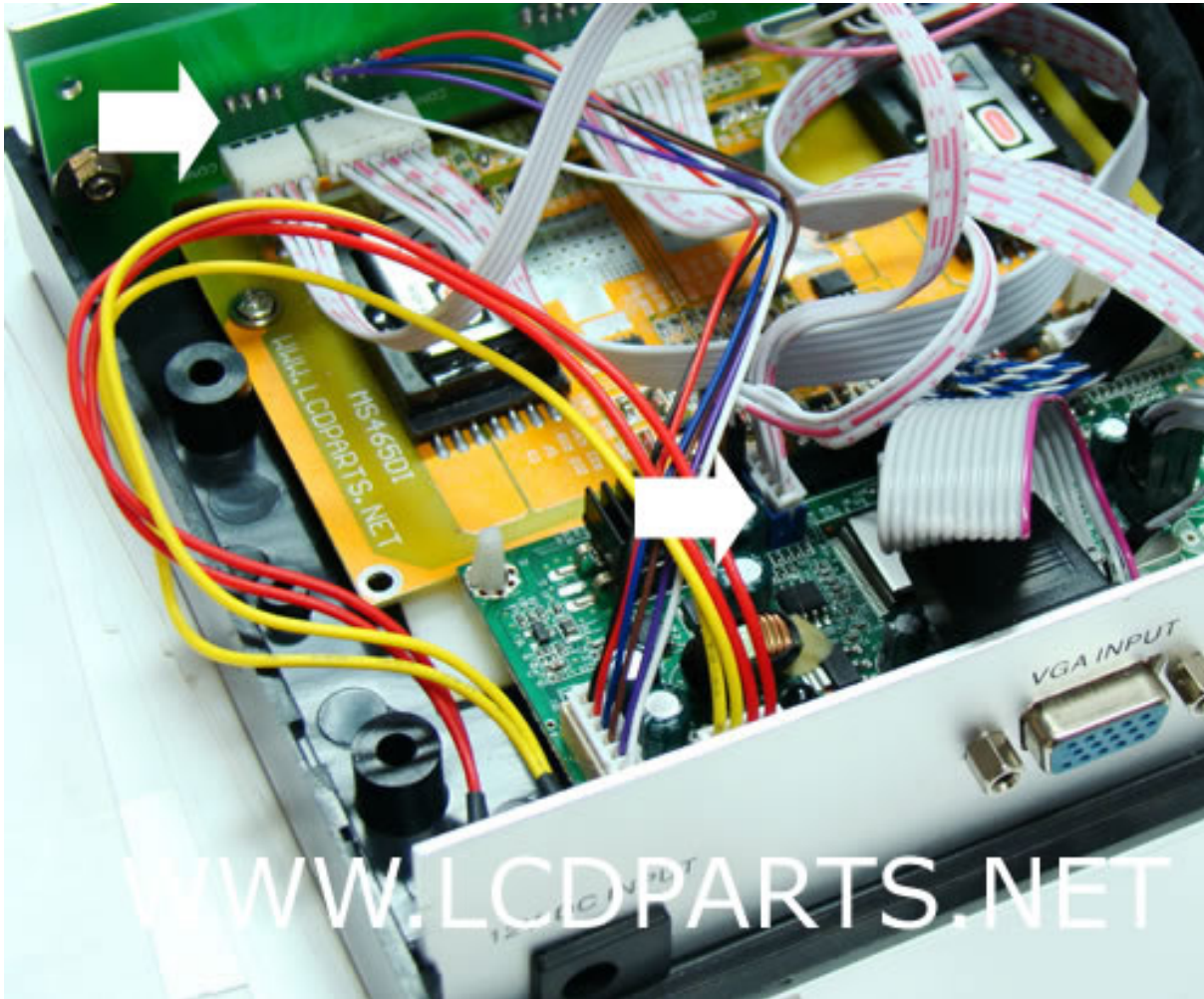


DB01 - How to upload drive to LST02
www.lcdparts.net/db01.aspx

DB01 - How to upload drive to LST02
www.lcdparts.net/db01.aspx

“Timeout while waiting for response”, if the problem still exists, please check the connections on the following parts:

Check 4 pin wire connector on both end inside of LST02



DB01 - How to upload drive to LST02
www.lcdparts.net/db01.aspx

DB01 - How to upload drive to LST02
www.lcdparts.net/db01.aspx

Check the connection on DB01's 9 pin female connector and 4 pin connector's solder joints:



If the problem still exist, then you need a replace a "Chip", please contact us at techsupport@lcdparts.net

DB01 - How to upload drive to LST02
www.lcdparts.net/db01.aspx