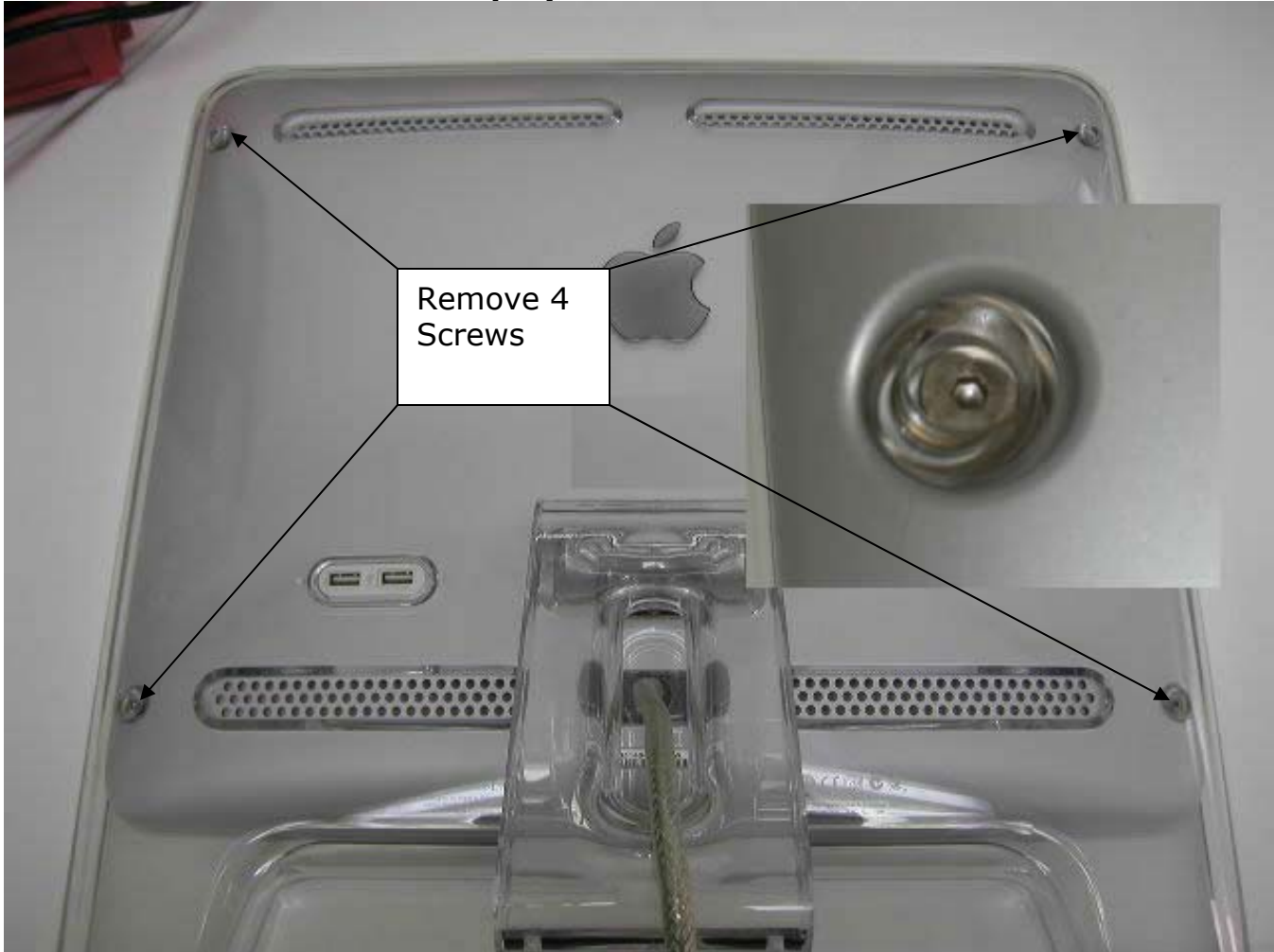


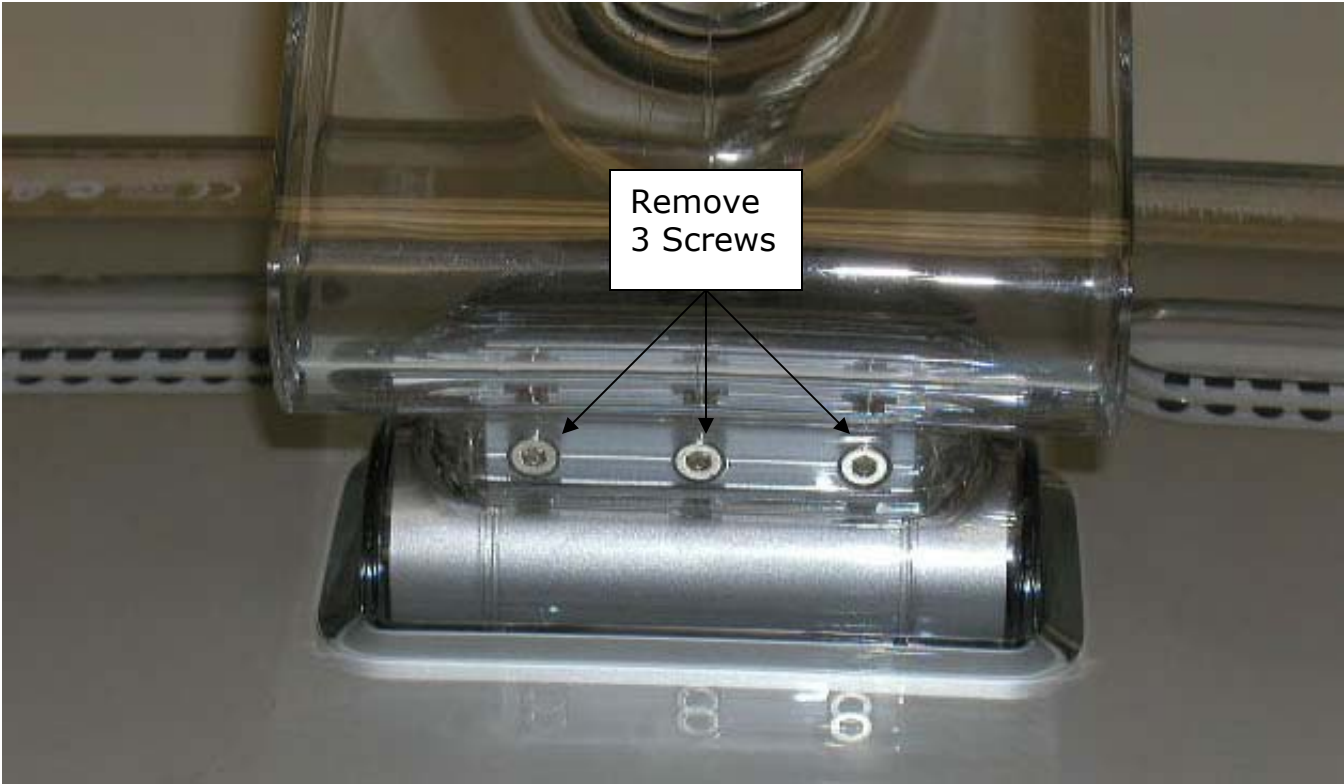
MoniServ, Inc

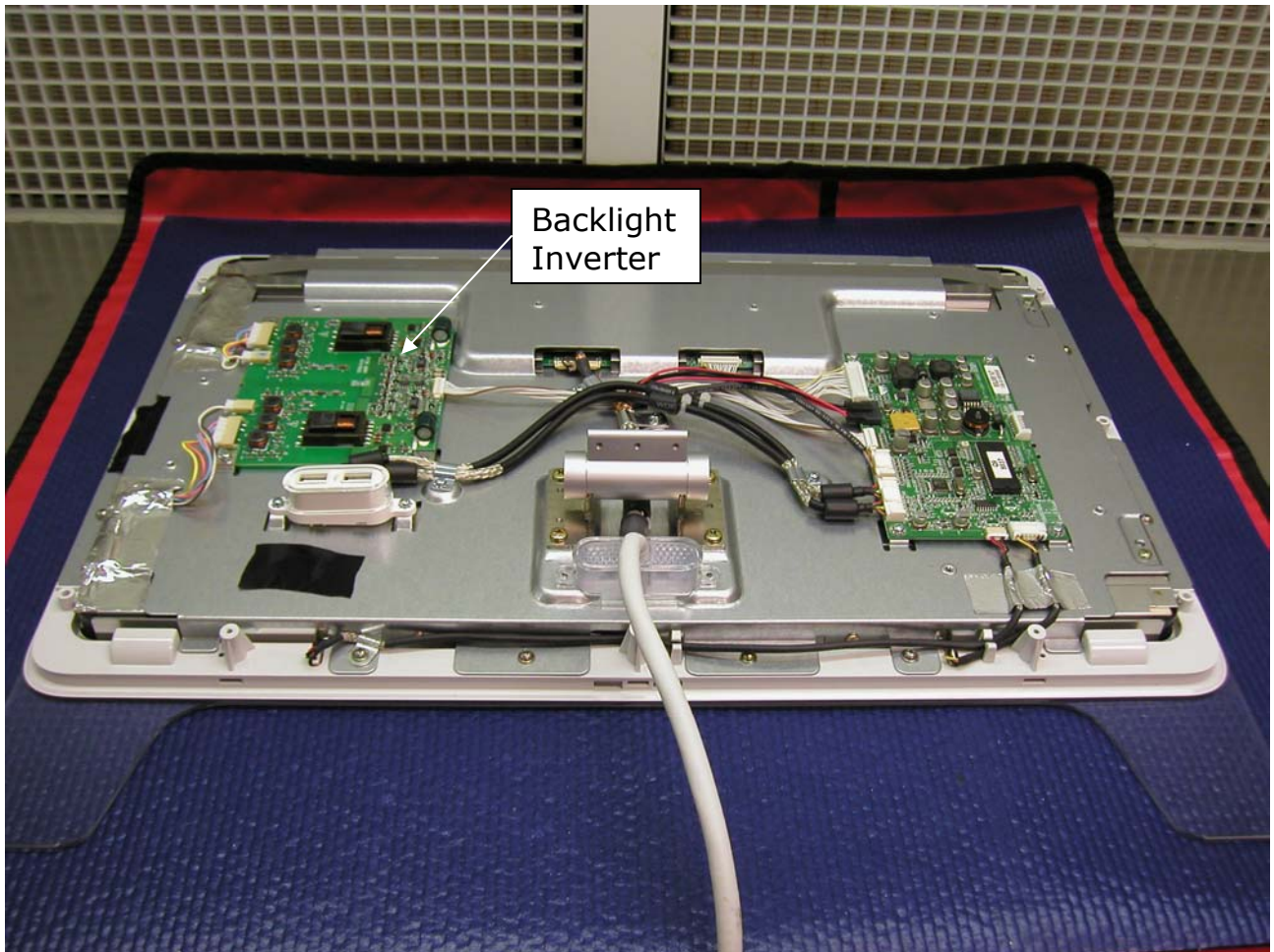
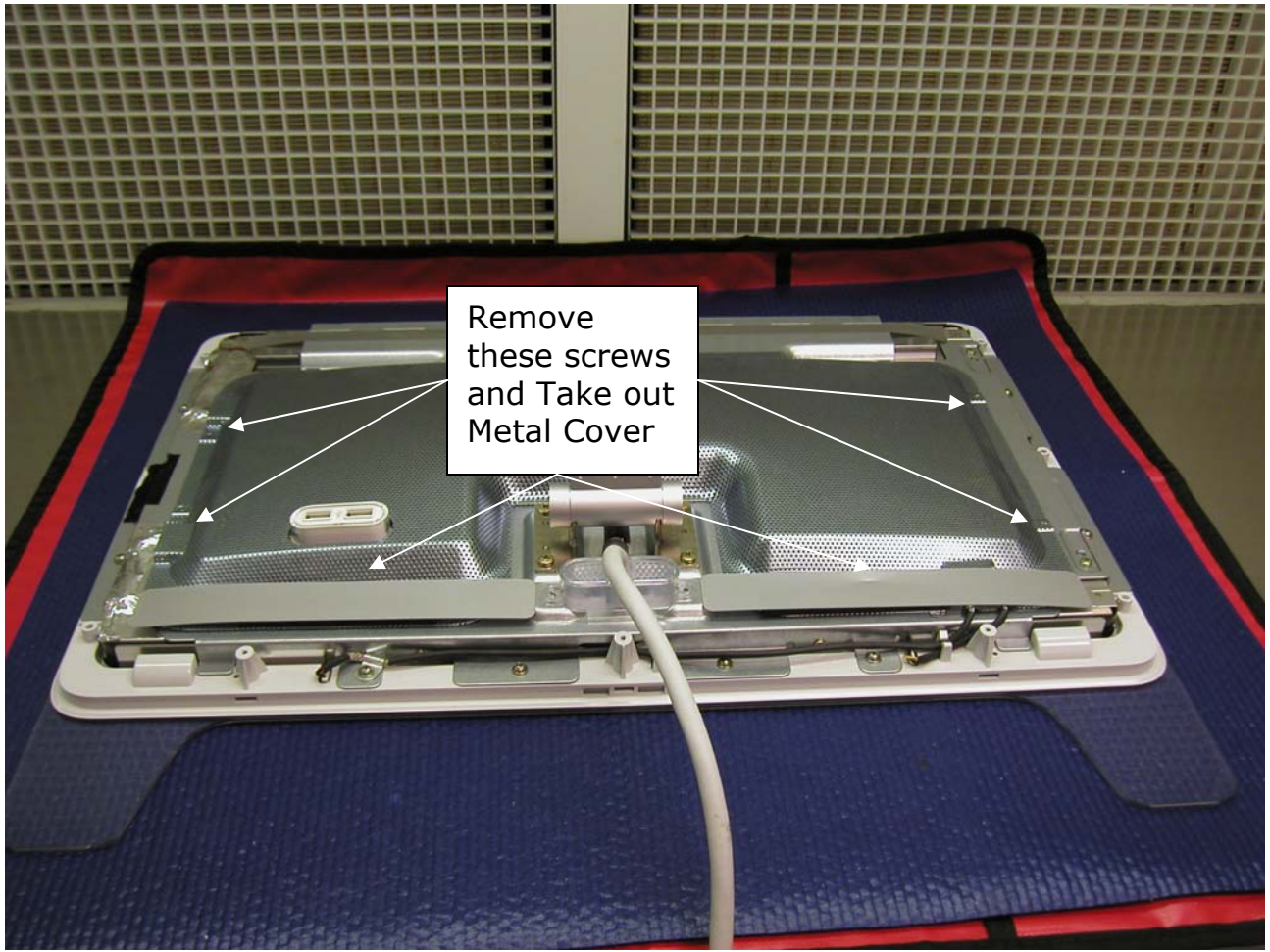
<http://www.moniserv.com>

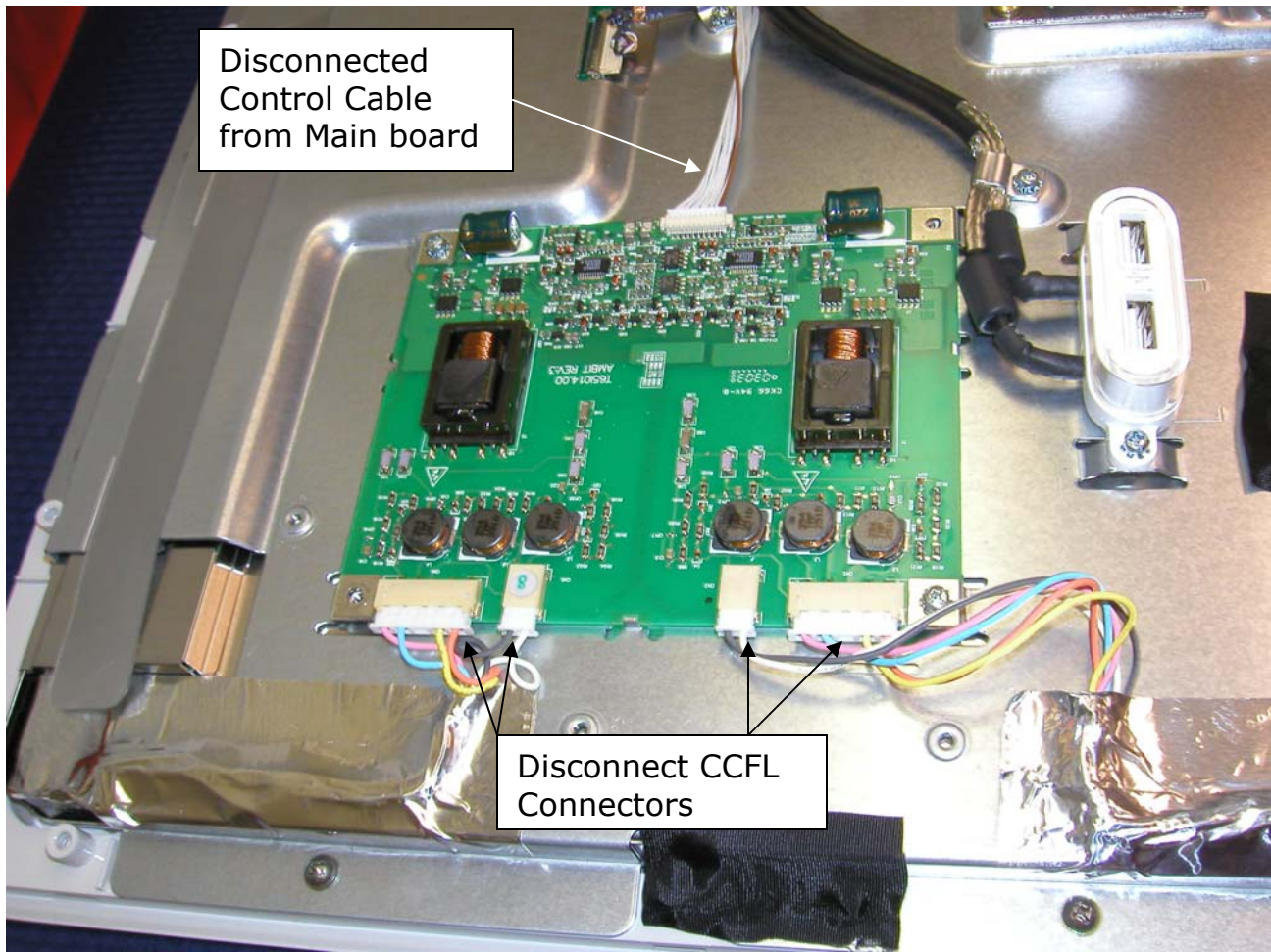
<http://www.lcdpart.com>

**Backlight Inverter Installation Guider for 20" Apple Studio Display
Model: A1038/Flat Panel Display**









Disconnect the backlight connector and CN1 Connector, Replace with MoniServ Substitute Board (MoniServ T651014.00MSS)
Connect ADC Video Cable to Apple Computer, Now, your Monitor should be working fine.